



NATIONAL CONFERENCE ON
EDUCATION

Leading for
**STUDENT-CENTERED,
EQUITY-FOCUSED**
Education

FEBRUARY 17–19, 2022

★ MUSIC CITY CENTER, NASHVILLE, TN ★

When schools were thrust into the COVID-19 pandemic, equity became a critical barometer as changes were made to accommodate necessary distance learning, safety, technology, mental health and wellness, and other innovative approaches to education. Let's come together at AASA's National Conference on Education, where education sessions reinforce how critical your leadership is to support the needs of all students

PRE-EVENT PLANNER
REGISTER EARLY AND SAVE!

NCE.AASA.org

Presented by:

AASA
THE SCHOOL SUPERINTENDENTS ASSOCIATION

SCHEDULE OF EVENTS



WEDNESDAY, FEBRUARY 16

1 – 5pm

- Pre-Conference Workshops

2 – 5pm

- Registration Open
- Bookstore Hours

THURSDAY, FEBRUARY 17

7am – 4:15pm

- Registration Open

7am – 7:30pm

- Bookstore Hours

7:45 – 9am

- Exhibit Hall Coffee Break

7:45am – 4pm

- Exhibit Hall Hours

9 – 10am

- Thought Leader Sessions and Educational Sessions and Roundtables

10:15 – 11:15am

- Thought Leader Sessions and Educational Sessions and Roundtables

12noon – 1:30pm

- Federal Relations Luncheon

1:45 – 3pm

- Exhibit Hall Snack Break

3 – 4pm

- Thought Leader Sessions and Educational Sessions and Roundtables

4:15 – 6:15pm

- General Session

6:30 – 7:30pm

- Welcome Reception

7:15 – 8:15pm

- AASA Graduation Ceremonies

FRIDAY, FEBRUARY 18

7:30am – 5pm

- Registration Open
- Bookstore Hours

8 – 9am

- Educational Sessions

8am – 3pm

- Job Central

9 – 11am

- Second General Session

11am – 2:30pm

- Exhibit Hall Hours

11:15am – 12:15pm

- Thought Leader Sessions and Educational Sessions and Roundtables

12:30 – 2:30pm

- Dr. Effie H. Jones Memorial Luncheon

12:45 – 1:45pm

- Thought Leader Sessions and Educational Sessions and Roundtables

1:45 – 2:15pm

- Exhibit Hall Snack Break

2:30 – 3:30pm

- Thought Leader Session and Educational Sessions

3:45 – 4:45pm

- Educational Sessions

SATURDAY, FEBRUARY 19

7:30am – 12noon

- Registration Open

7:30am – 12noon

- Bookstore Hours

8 – 9am

- Educational Sessions

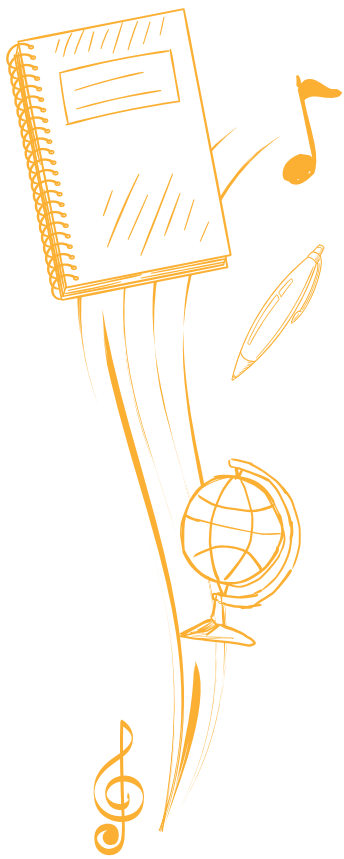
9:15 – 10:15am

- Educational Sessions

10:30am – 12noon

- Closing General Session





DAILY GENERAL SESSIONS



THURSDAY, FEBRUARY 17
4:15 – 6:15PM

► **Tim Shriver**

*Chairman, Special Olympics International,
Washington, DC*



FRIDAY, FEBRUARY 18
9 – 11AM

► **Leslie T. Fenwick**

*Dean Emeritus and Professor, Howard University,
Washington, DC*



SATURDAY, FEBRUARY 19
10:30AM – 12NOON

► **Mark Edwards**

Leadership Today & Retired Superintendent

► **Michael Fullan**

*Professor Emeritus and former Dean of Education,
OISE/University of Toronto*



THOUGHT LEADER SESSIONS

THURSDAY, FEBRUARY 17
9 – 10AM

► **Building the Talent Pipeline: The Potential Impact of Assistant Principals**

Identifying, appointing, supporting and developing talent to diversify the leadership pipeline for America's schools has become an ever-increasing lever in improving student outcomes. A report released in April 2021 highlights the importance of intentional, incremental, systematic development of the leadership pipeline.

Moderator: Dan Domenech, Executive Director, AASA, Alexandria, VA

Speakers:

Burke Royster, Superintendent, Greenville County Schools, SC

Ellen Goldring, Vanderbilt University

Sharon Contreras, Superintendent, Guilford County Schools, NC

THURSDAY, FEBRUARY 17
3 – 4PM

► **Building Capacity in Rural Districts for Future-Driven Learning**

The pandemic exacerbated inequities in resources, access and opportunity for students in rural settings in particular. Join a panel of rural superintendents who are moving their communities forward with intentionality and urgency toward more forward-driven learning practices.

Speakers:

Brian Creaseman, Superintendent, Fleming County Schools, KY

Matt Dillon, Superintendent, Petal Schools, MS

Jill Jacoby, former Superintendent, Fort Cherry School District, PA

THURSDAY, FEBRUARY 17
3 – 4PM

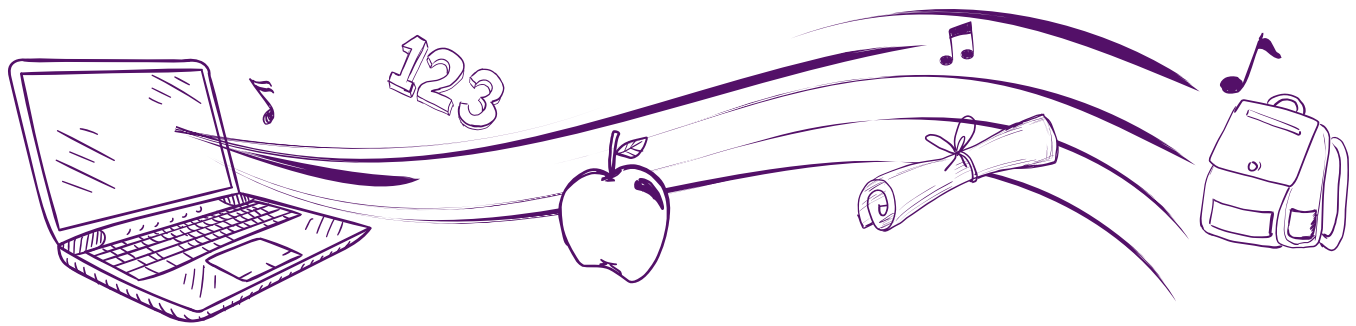
► **Navigating SEL From the Inside Out: Matching Programs to District Needs**

In 2021, the Wallace Foundation released a new report designed to help schools and program leaders look inside different SEL programs and see what makes them different from one another and help choose strategies that best suit their needs. The 2021 report includes a focus on pre-kindergarten, equity and trauma-informed SEL.

Speaker:

Stephanie Jones, lead author on *Looking Inside and Across 33 Leading SEL Programs: A Practical Resource for Schools and Out of School Time Providers* report





FRIDAY, FEBRUARY 18 11:15AM – 12:15PM

► Building Post-Secondary Options and Impact

Preparing students for their futures, not our past, has to be intentional as we redefine what it means for a learner to be ready for careers, which may include college, military, work. This panel will share research, strategies and promising practices in developing opportunities for students beyond high school by engaging them in careers during high school and ensuring rigorous preparation.

Moderator: Dave Schuler, Superintendent of District 214, IL

Speakers:

Ann Levett, Superintendent of Savannah-Chatham Schools, GA

Gene Bottoms, founder of High Schools That Work and former SVP, Southern Regional Education Board (SREB)

FRIDAY, FEBRUARY 18 11:15AM – 12:15PM

► How State Policy Can Support Local School Districts as They Develop Comprehensive and Aligned Principal Pipelines

A new report by the Wallace Foundation explores how state policy can accelerate development of talent pipelines and provides recommendations. Join the lead researcher Paul Manna and state commissioners to explore ways to accelerate effectiveness of principal pipelines.

Moderator: Jackie Wilson, Delaware Academy of School Leadership

Speakers:

Susan Bunting, Commissioner, Delaware Department of Education

Paul Manna, College of William and Mary

Michael Rice, State Superintendent, MI

Penny Schwinn, Commissioner of Education, TN

Molly Spearman, Molly Spearman

FRIDAY, FEBRUARY 18 12:45 – 1:45PM

► Next Education Workforce: Increasing and Diversifying the Education Workforce

For many years, we have focused on teacher shortage, decreasing numbers of people coming into the field and increasing numbers leaving quickly. But what if these challenges are symptomatic of a larger, more systemic issue — the design and development of a Next Education Workforce. This presentation will examine new ways of thinking about who's in the education workforce, what roles they play, how they work together, how we prepare them, and ultimately how diverse teams of educators can personalize and deepen learning for all learners. At the same time, we will see that a larger and longer continuum of experts and expertise can also create new kinds of advancement pathways for educators. By building the Next Education Workforce — we can change the learning for students and the working environment for educators.

Speaker: Carole G. Basile, Dean & Professor, Arizona State University, Mary Lou Fulton Teacher College, Tempe, AZ

FRIDAY, FEBRUARY 18 2:30 – 3:30PM

► Superintendent/School Board Relations — A Discussion Between NSBA Executive Director Chip Slaven and AASA Executive Director Dan Domenech

Come hear an informative discussion between the AASA and NSBA executive directors, who agree that an effective superintendent/school board management team is essential to a school system's success, and learn how the two organizations work together to accomplish common goals.

Speakers:

Chip Slaven, Interim Executive Director & Chief Executive Officer, NSBA, Alexandria, VA

Dan Domenech, Executive Director, AASA, Alexandria, VA

PRE-CONFERENCE WORKSHOPS

Tickets can be purchased during online registration; space is limited.

WEDNESDAY, FEBRUARY 16 1 – 5PM

► Building a High-Impact Board-Superintendent Strategic Governing Team

This four-hour preconference workshop will draw on the new book *“Building a High-Impact Board-Superintendent Partnership,”* in familiarizing participants with significant developments in the rapidly evolving field of K-12 governance and providing detailed, tested guidance in building and managing a close, positive and productive partnership between the school board and superintendent. Topics will include the nuts and bolts work involved in governing, processes for engaging board members in making key governing decisions and judgments, using well-designed board committees, and managing the board-superintendent partnership, including board evaluation of superintendent performance.

Doug Eadie, President and CEO, Doug Eadie and Company, Inc., Clearwater, FL



WEDNESDAY, FEBRUARY 16 1 – 5PM

► Your Roadmap to 21st Century Education Starts Here

Hundreds of transformative school systems around the nation have used the Portrait of a Graduate to define the competencies and mindsets that their students need to thrive in the 21st century. Shifting traditional teaching and learning practices is complex, systemwide work. In this interactive session, participants will:

- Deepen understanding of the elements of the school system that work synergistically to support Portrait of a Graduate outcomes.
- Understand the key moves in developing a Portrait of a Graduate, Portrait of an Educator, Portrait of a Leader and Portrait of a System.
- Explore how to center diversity, equity and inclusion (DEI) to achieve student-centered, equity-focused 21st century education.
- Understand how to create a systemwide action plan/road map to engage all students in student-centered, equity-focused 21st century learning experiences.

Three superintendents will share highlights of their system's 21st century education journey, including what works, what doesn't and what they wished they had known when they began the process. They'll also address the importance of leveraging community engagement in the Portrait of a Graduate process to ensure positive transformations in student learning. All participants will receive a rich collection of tools, resources and artifacts, including student work, from leading districts across the country. Join us to start building your district's 21st century roadmap!

Karen Garza, President and CEO, Battelle for Kids

Valerie Greenhill, Vice President, Battelle for Kids

Michael Barnes, Superintendent, Mayfield School District, OH

Kelly Lyman, Superintendent, Mansfield School District, CT

Michael McCormick, Superintendent, Val Verde Unified School District, CA



WEDNESDAY, FEBRUARY 16 1 – 5PM

► **Advancing Your Equity Stance as a Central Office Leader**

Central office leaders across the country are grappling with what it means to be an equity-centered leader. This session is dedicated to helping leaders deepen their understanding of how they can build an equity stance into their day-to-day practice and interactions. Participants will have opportunities to engage with tools and a framework to both reflect and envision a more equitable path forward. Particular attention will be paid to how central office leaders can better support principals in their own equity leadership journey. This session will be led by a team from the University of Washington Center for Educational Leadership.

Michele Mason, Senior Director,
University of Washington Center for
Educational Leadership, Seattle, WA

Lisa Rooney, Director of Framework
Development and Support, University
of Washington Center for Educational
Leadership, Seattle, WA

Max Silverman, Executive Director,
University of Washington Center for
Educational Leadership, Seattle, WA

SPECIAL EVENTS



**Tickets can be purchased during online registration;
space is limited.**

THURSDAY, FEBRUARY 17 9 – 11AM

► **Special Contracts Session**

No part of a superintendent's working conditions is more important than the contract with the school board. Get an overview of key contract provisions for superintendent contracts and contract provisions to avoid. Participate in a discussion about who should negotiate a contract for a superintendent, how a superintendent can avoid being terminated and key provisions of severance agreements, should termination be necessary.

Presenter: Maree Sneed, Partner, Hogan Lovells US LLP, Washington, DC

THURSDAY, FEBRUARY 17 12NOON – 1:30PM

► **Federal Relations Luncheon**

This long-running advocacy-related event is an opportunity for NCE attendees to take a deep dive into an education policy related topic. For this ticketed luncheon, the AASA advocacy team brings in a dynamic speaker to provide remarks on a relevant, engaging and oftentimes hot education policy, an opportunity to hear what it will mean for schools, and engage in Q&A. The speaker is announced in early winter, and the event regularly sells out.

FRIDAY, FEBRUARY 18 12:30 – 2:30PM

► **Dr. Effie H. Jones Memorial Luncheon**

The Dr. Effie H. Jones Humanitarian Award honors the memory of Dr. Jones, a school administrator, teacher, counselor, organizer of the Office of Minority Affairs at AASA, and a champion of women and minorities in educational leadership. Equity and opportunity were the hallmark of her life's work, and closing the academic, health and social gap between children who have and those who don't was one of the cardinal intents of her rigorous efforts to increase the number of women and minority school system leaders. Because of her vision and commitment, AASA's focus on equity, on superintendent pipeline issues, and on vulnerable children and youth is sharp and unrelenting.

EDUCATION SESSIONS



Connect with like-minded leaders and share strategies on improving equity, personalization of education student outcomes, district performance and so much more.

Managing Districts

- Solving the Growing Challenges of Cybersecurity
- Oregon Women Superintendents: A Case Study on Developing Effective Supports
- An Update on Federal Regulations, Guidance and Court Cases
- Reclaiming Our Lost Students Office of Recruitment and Recovery
- Successes and Struggles in Funding Programs for Students Experiencing Homelessness

Re-Engineering Learning

- AVID: From Mission Statement to Data-Driven Dialogue
- A Bridge Over Troubled Waters: Black Women as Bridge Leaders
- Leveraging the Community to Rebuild and Re-engage
- Reimagining, Redefining and Renewal of Student Preparation and Readiness
- A Deep Dive with SEL: Panel of Superintendents Share Their Insights and Lessons Learned
- Flexible Facility Design Beyond the Pandemic
- Virtual Learning: Out-of-the-Box Thinking with Unexpected Results
- Focusing on Equity and Access to Advanced Learning Opportunities
- Fostering Future-Ready Schools
- Empowering Principals to Conquer Unfinished Learning: An Assessment Journey
- Collegiate Edu-Nation: A P-20 System Model for Rural Student Success

School Environment and Culture

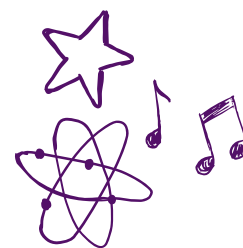
- Your Voice Matters: Community Engagement Beyond the Vote
- Improving School Culture with Mental Health Supports
- Here to Help: Supporting Students' Mental Health Needs
- Ensuring LGBTQ+ Students and Staff Thrive
- Achieving Student Agency Through Collaborative Leadership and Partnerships
- Leading for Wellness Equity
- Transforming Schools by Maximizing Your Human Capital
- Leading School Systems During the Past Two Years: Lessons Learned
- Embracing a Diversity Reckoning in a High-Performing Suburban District

- Widening Our Leadership Lens: Seeing and Developing Classified Staff Leaders

Transformational Leading and Learning

- Elementary Computer Science — Why Now Is the Time and Equity Is in the Driver's Seat: A Superintendent Panel Discussion
- Systems, Structures and the Science of Reading — Leadership Is the Key
- Best Practices in Early Learning: Superintendents Early Childhood Toolkit
- Develop a Shared Vision of Equity-Centered Leadership
- An Engaging Conversation About Enduring Leadership Issues
- What Schools Today Must Be — Perspectives from Three Superintendents
- Personal, Professional and Practical Challenges for White Superintendents Confronting Racism
- Leadership Perspectives: Advancing Student Engagement and Equity in Deeper Learning
- Not Another Thing: A Panel of Leaders Proving Improvement Is Possible
- #24United: Leadership Through Partnership and Communication
- Breaking Down Barriers to Student Achievement
- Equity Leadership in Action: Lessons from the COVID Crisis
- Equitable Identification of All Gifted Students: Obstacles and Solutions
- Equity for All: Transforming a District
- Deep Change: A Model for Renewing and Strengthening Schools
- Women and Artful Leadership for the New Student Majority
- Redefining Student Success: A Powerful Strategy for District Transformation
- Courageous Leadership: A Systems Approach to Equity
- Living a "Full" Life ... Female Leadership Perspective
- Everyone Needs a Coach: How Support for Principals Should Change
- Getting Serious About the Future of Learning
- Student Voice: From Invisible to Invaluable
- Mental Health and Suicide Prevention Tools for Districts and Families
- My Child's Not Depressed Anymore
- The Chill Project by AHN — A Comprehensive Approach to Social Emotional Learning

ROUNDTABLE SESSIONS



THIS FORMAT IS MEANT TO BE HIGHLY INTERACTIVE

Each session is geared toward a specific topic, so please come prepared to participate! You will switch tables to view two presentations within the 60 minutes. Each table is limited to eight participants. All presentations take place in the NCE Exhibit Hall in the designated Roundtable Area.

A sample of the topics:

1. Using Superintendent Evaluation to Reflect District Goals and Professional Growth
2. Financing Your Equity Vision
3. Using Social Media to Tell Your District's Story and Lead During Times of Crisis
4. The Dallas Miracle and Systemic Reform
5. Personalized Learning in a Pandemic — Strategies for Success During Tumultuous Times
6. Engaging White Educators in Racial Justice
7. Listening to Lead: Using Student Voice to Drive Equity, SEL
8. Transforming Learning and Leadership Through Brain Science: A Paradigm Shift
9. College, Career, Life Ready in Naperville 203 — Shifting the Paradigm
10. Creating Equitable Environments in Advanced Classes
11. A Critical Analysis of a School Division's Journey to be Anti-Racist to Ensure Equity for All
12. The Perfect Union: SEL and EdTech (Using SEL to Capitalize on Our Technology Strengths)
13. A Rockin' Way to Accelerate Math Recovery!
14. Greatness Grows by Building a Caring Community
15. Digital Engagement Learning Characteristics of the Z and Alpha Generation
16. Bold-Courageous: Confronting Racism and School Inequities Through Intercultural Discourse
17. Making Equity Tangible with Cambridge International
18. 25 Proven Tactics to Increase Community Engagement
19. Montessori for Every Child: Longview ISD's Commitment to Equity and Excellence
20. The Science of Reading Meets the Science of Learning
21. Designing Kindergarten Partner Activities to Boost Academic Outcomes and SEL
22. Redefining Ready — Bring It to Your District/Region/State
23. Leadership Matters: Tenure Attainment Plan for New Leaders
24. Shifting to a Reflective Teacher Evaluation Model
25. The Farmington Way: A New Mexico School District Success Story
26. Embedding Social-Emotional Learning into Daily Instruction
27. Leading for Equity: Small Steps with Large Impact
28. The Restorative Path to School District Transformation
29. Ensuring Welcoming and Inclusive Schools: Working with Students, Staff, Community
30. Community Engagement Is the New Attendance Solution
31. How HIP Is Revolutionizing High School Health Education
32. One District's Dramatic Changes to Elementary Mathematics Teaching and Learning
33. The Urgency of Gender Equity Education in Elementary Schools
34. Effective Classroom Management
35. Innovation & Inquiry: Teaching & Leading for Equity in 21st Century Schools
36. Career Development for Middle School Students
37. 3 Strategies for High-Needs Campuses to Achieve Mathematics Success
38. Addressing the Generational Communication Differences in the Educational Environment
39. High Dosage Tutoring — The Early Literacy Answer
40. Next Steps to the New Normal: Creating Ecosystems of Equity in K–12 Schools & Districts
41. Let's Get Real: Implementing School-Wide Project-Based Learning
42. Transformational Leading and Learning: One District's Story of Change
43. Taking a Neural Lens Approach to School Improvement
44. Innovative Approach to DEI Including All Stakeholders: Superintendent's Advisory Council
45. Crisis Communication: Building Trust When Tensions Are High
46. RTI and Elective Courses, a 2-for-1 Combo PD Session: A Roadmap to Applying Structure and Systematic Procedures for an Effective RTI Program While Also Adding Elective Courses Without Spending Any Money

SHOP AND COMPARE IN THE NCE EXHIBIT HALL



EXHIBIT HALL HOURS

Compare and demo the products your district needs over the next 1–3 years. Make appointments in advance — you can meet more suppliers in two days than over several months back at the office.

- ▶ THURSDAY, FEBRUARY 17.....7:45AM – 4PM
- ▶ FRIDAY, FEBRUARY 18.....11AM – 2:30PM

DON'T MISS THESE KEY DESTINATIONS INSIDE THE NCE EXHIBIT HALL:



★ School of the Future

Learn about out-of-the-box products and services offered by exhibiting companies.



★ Knowledge Exchange Theater

Listen and learn with professional development sessions.



★ AASA Social Media Lounge

Attend insightful sessions and hands-on training for education leaders to share tips and tricks



★ Coffee Breaks and Snack Breaks

Relax, check back with the office and do some informal networking.



2022

EXHIBITORS

- Achieve3000
- Agenda Manager
- ALC Schools
- American Fidelity Assurance
- Apptegy
- Audio Enhancement
- Battelle for Kids
- Blackboard
- BoardDocs
- BookShark Virtual
- BOOTUP Professional Development
- Brainfuse
- Cambridge Assessment International Education
- CatchOn
- Chartwells K12
- ClassLink
- Cognia
- DotCom Therapy
- Durham School Services
- EAB
- ECRA Group, Inc.
- EF Educational Tours, Inc.
- ENA
- ESS
- E-Therapy
- EVERFI
- First Student, Inc.
- Forecast5 Analytics, Inc.
- FranklinCovey Education
- Gaggle
- Hellas Construction
- HES Facilities Management
- Hope Squad
- The HON Company
- Instructure
- JASON Learning
- Lightspeed Technologies
- Lincoln Learning Solutions
- LINQ
- LYSOL
- Marco Learning
- Microsoft
- myFace
- myOptions
- National Institute for Excellence in Teaching (NIET)
- Otter Products, LLC
- Paradigm Shift Education
- PMA Financial Network LLC
- Presentation Solutions, Inc.
- Reading Plus
- SafeDefend, LLC
- Save The Music Foundation
- SchoolCEO
- SchoolLinks
- SchoolSims
- SFE – Southwest Foodservice Excellence, LLC
- Skyward, Inc.
- Snap! Raise
- Sodexo
- Southern Regional Education Board
- SPARK Mentoring Programs
- SSC Services for Education
- Staff EZ
- Standard For Success
- Student Transportation of America
- Surf Wisely
- Tobacco-Free Kids
- Wilson Language Training
- XAP Corporation
- YouthTruth

(as of 9/22/21)



NOW THAT WE'RE BACK FACE-TO-FACE, REBUILD YOUR NETWORK



AASA's National Conference on Education is the most comprehensive professional development and networking event for school superintendents and administrators. We're looking forward to welcoming you back together in Nashville. **After more than a year of digital exchange, meet up with old friends for meaningful discussions and fun!**

Stay current with the research, trends and connections that help advance not only the profession but also your individual career. This three-day event combines peer-to-peer networking with 3,000 superintendents from across the country, world-class education from seasoned practitioners, opportunities to interact with game-changers from outside the education field, and the NCE Exhibit Hall.



Our priority is delivering an education-focused and rewarding experience — and a safe way to connect. We are constantly monitoring federal, state and local health regulations.



YOU MAY SEE CHANGES SUCH AS

- ★ Redesigned Exhibit Hall
- ★ Hygiene & Sanitation Standards
- ★ Updated Staff Training
- ★ Social Distancing Practices
- ★ But what won't change is our commitment to you!



For more details and to register,
visit nce.aasa.org

REGISTER BEFORE OCT. 31 AND SAVE!